



V:\01609\Active\160950269\planning\drawing\mxd\20130212\_REA\_NHA\_Figures\160950269\_Figure\_6\_Candidate\_Significant\_Wildlife\_Habitat\_Mapbook.mxd  
 Revised: 2013-08-14 By: pwersell

March, 2013  
160950269

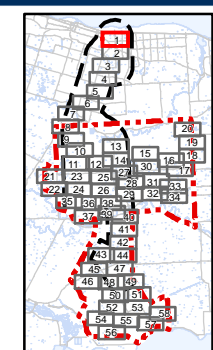


**Legend**

- |                            |   |                               |   |                        |
|----------------------------|---|-------------------------------|---|------------------------|
| Project Study Area         | Preferred Transmission Route              | Amphibian Breeding Stations   | Other Rare Vegetation Community   | Turtle Wintering Area  |
| Interconnector Study Area  | Alternate Transmission Route              | Snake Hibernacula             | Amphibian Breeding Habitat  | Bat Maternity Colonies |
| 120m Zone of Investigation | Temporary Laydown Area                    | Snake Hibernacula 30m Buffer  | Cliff and Talus Communities   |                        |
| Proposed Turbine Location  | Collector Lines – Underground or Overhead | MBB Point Count Location      | Raptor Wintering Areas  |                        |
| Turbine Blade Length       | Fibre Optic Line                          | Migratory Bird Transect       | Woodland Raptor Nesting Habitat/<br>Woodland Area Sensitive Bird Breeding Habitat |                        |
| Tap-in Location            | Potential Access Road                     | Winter Raptor Transect        | Woodland Vole Habitat   |                        |
| Junction Box               | Access Road 20m Construction Area         | Woodland Communities          | Terrestrial Crayfish Habitat  |                        |
| Proposed Culvert           | Potential Construction Laydown Area       | Deer Congregation Areas (MNR) | Turtle Nesting Habitat/Snapping Turtle Habitat                                    |                        |
|                            | Transformer Substation                    | Landbird Migratory Stopover   | Turtle Habitat 30m Buffer   |                        |

**Notes**

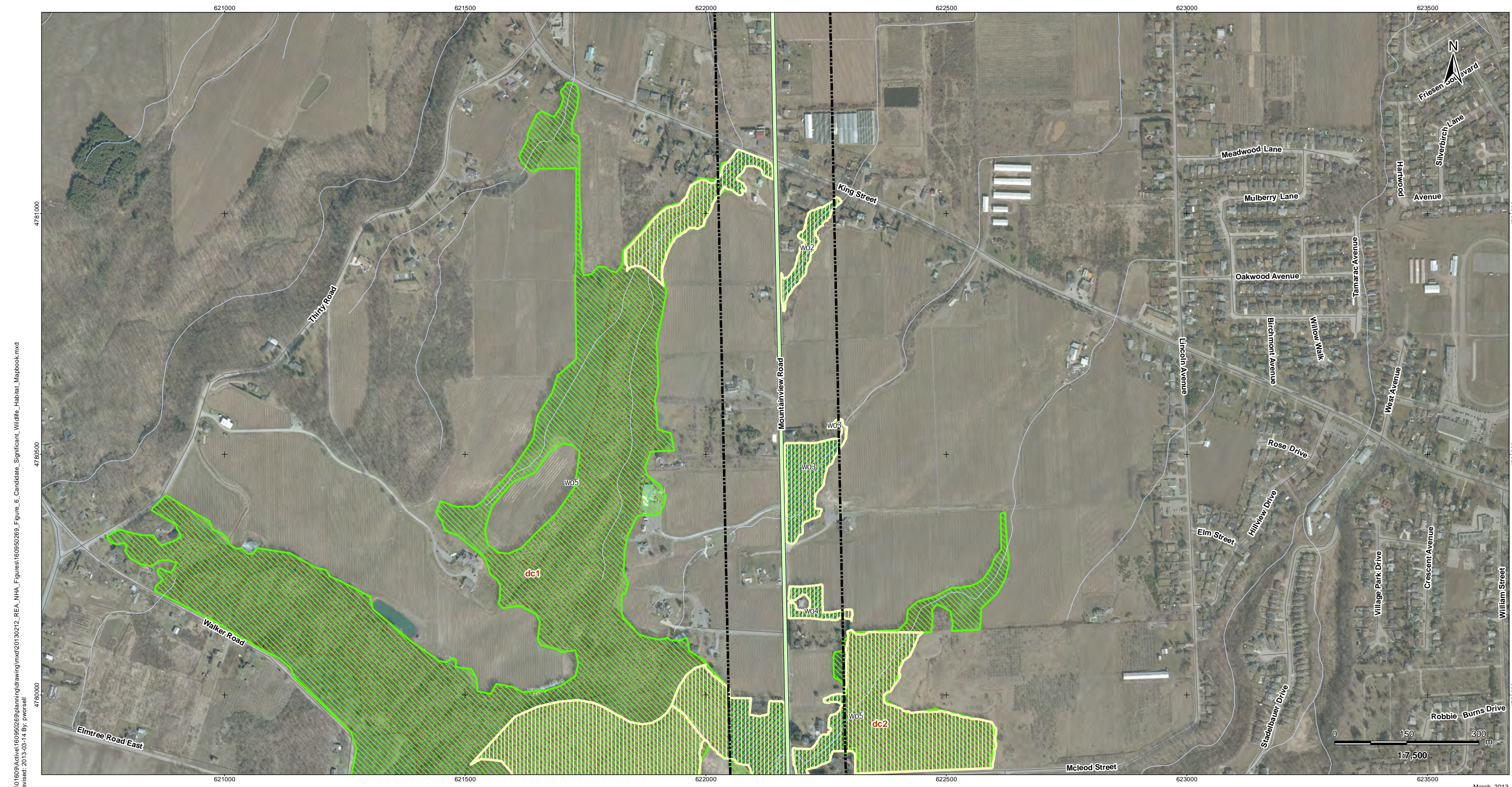
- Coordinate System: NAD 1983 UTM Zone 17N).
- Base features produced under license with the Ontario Ministry of Natural Resources © Queen's Printer for Ontario, 2011.
- Orthoimagery © First Base Solutions, 2010.



Client/Project  
 Niagara Region Wind Corporation  
 Natural Heritage Assessment Report

Figure No.  
 6.1

Title  
**Candidate Significant  
 Wildlife Habitat  
 Figure 6.1**



V:\01609\Active\160950269\planning\drawing\mxd\20130212\_REA\_NHA\_Figures\160950269\_Figure\_6\_Candidate\_Significant\_Wildlife\_Habitat\_Mapbook.mxd  
 Revised: 2013-03-14 By: pwersell

March, 2013  
160950269

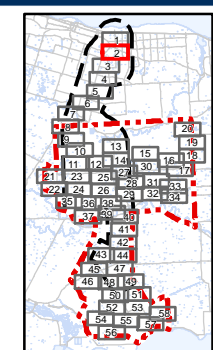


**Legend**

- |                            |   |                               |   |                        |
|----------------------------|---|-------------------------------|---|------------------------|
| Project Study Area         | Preferred Transmission Route              | Amphibian Breeding Stations   | Other Rare Vegetation Community   | Turtle Wintering Area  |
| Interconnector Study Area  | Alternate Transmission Route              | Snake Hibernacula             | Amphibian Breeding Habitat  | Bat Maternity Colonies |
| 120m Zone of Investigation | Temporary Laydown Area                    | Snake Hibernacula 30m Buffer  | Cliff and Talus Communities   |                        |
| Proposed Turbine Location  | Collector Lines – Underground or Overhead | MBB Point Count Location      | Raptor Wintering Areas  |                        |
| Turbine Blade Length       | Fibre Optic Line                          | Migratory Bird Transect       | Woodland Raptor Nesting Habitat/<br>Woodland Area Sensitive Bird Breeding Habitat |                        |
| Tap-in Location            | Potential Access Road                     | Winter Raptor Transect        | Woodland Vole Habitat   |                        |
| Junction Box               | Access Road 20m Construction Area         | Woodland Communities          | Terrestrial Crayfish Habitat  |                        |
| Proposed Culvert           | Potential Construction Laydown Area       | Deer Congregation Areas (MNR) | Turtle Nesting Habitat/Snapping Turtle Habitat                                    |                        |
|                            | Transformer Substation                    | Landbird Migratory Stopover   | Turtle Habitat 30m Buffer   |                        |

**Notes**

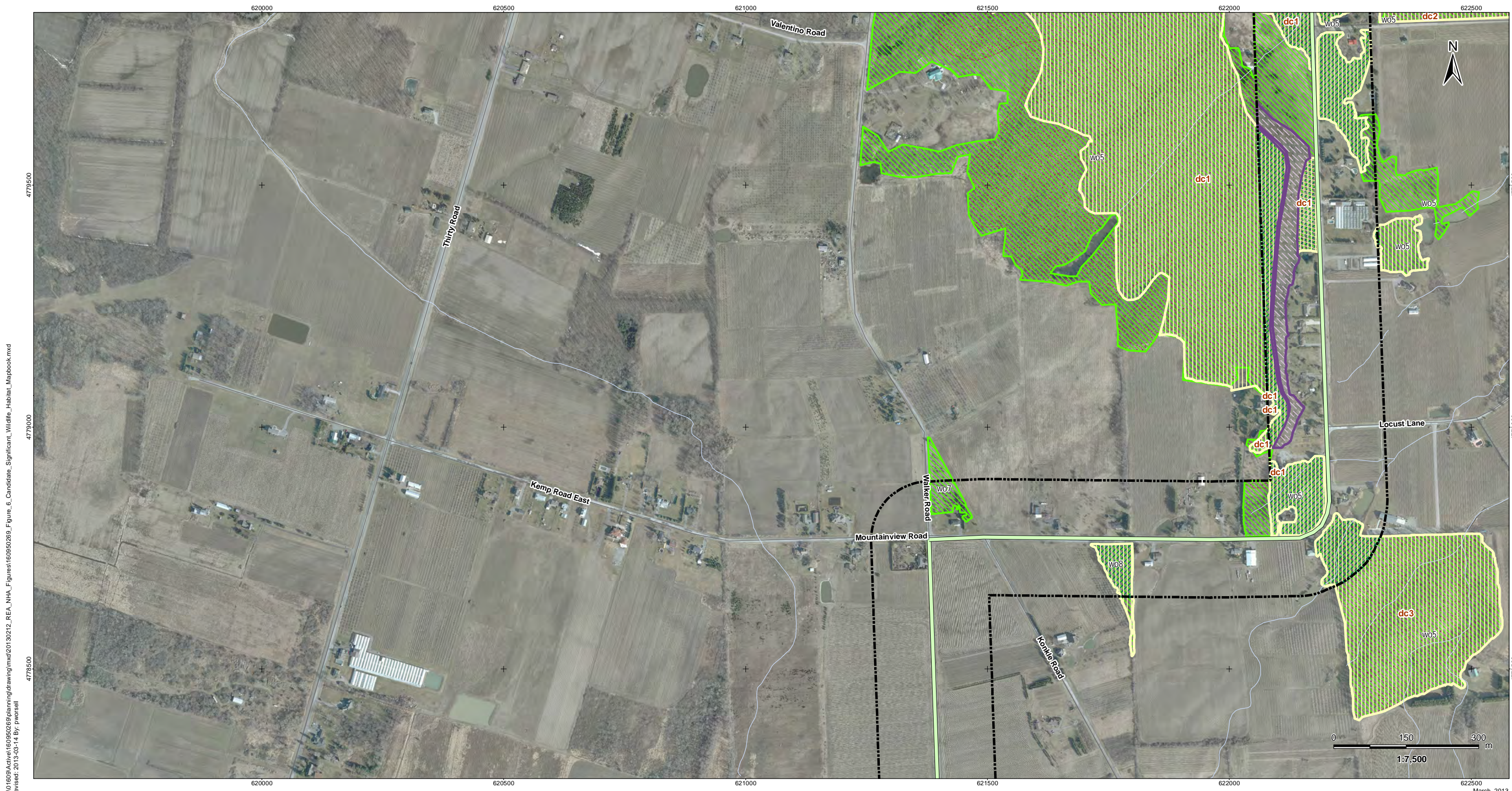
- Coordinate System: NAD 1983 UTM Zone 17N).
- Base features produced under license with the Ontario Ministry of Natural Resources © Queen's Printer for Ontario, 2011.
- Orthoimagery © First Base Solutions, 2010.



Client/Project  
 Niagara Region Wind Corporation  
 Natural Heritage Assessment Report

Figure No.  
 6.2

Title  
**Candidate Significant  
 Wildlife Habitat  
 Figure 6.2**



V:\01609\Active\160950269\planning\drawing\mxd\20130212\_REA\_NHA\_Figures\160950269\_Figure\_6\_Candidate\_Significant\_Wildlife\_Habitat\_Mapbook.mxd  
 Revised: 2013-03-14 By: pwersell

March, 2013  
160950269

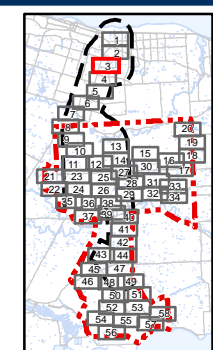


**Legend**

- |                            |   |                               |   |                        |
|----------------------------|---|-------------------------------|---|------------------------|
| Project Study Area         | Preferred Transmission Route              | Amphibian Breeding Stations   | Other Rare Vegetation Community   | Turtle Wintering Area  |
| Interconnector Study Area  | Alternate Transmission Route              | Snake Hibernacula             | Amphibian Breeding Habitat  | Bat Maternity Colonies |
| 120m Zone of Investigation | Temporary Laydown Area                    | Snake Hibernacula 30m Buffer  | Cliff and Talus Communities   |                        |
| Proposed Turbine Location  | Collector Lines – Underground or Overhead | MBB Point Count Location      | Raptor Wintering Areas  |                        |
| Turbine Blade Length       | Fibre Optic Line                          | Migratory Bird Transect       | Woodland Raptor Nesting Habitat/<br>Woodland Area Sensitive Bird Breeding Habitat |                        |
| Tap-in Location            | Potential Access Road                     | Winter Raptor Transect        | Woodland Vole Habitat   |                        |
| Junction Box               | Access Road 20m Construction Area         | Woodland Communities          | Terrestrial Crayfish Habitat  |                        |
| Proposed Culvert           | Potential Construction Laydown Area       | Deer Congregation Areas (MNR) | Turtle Nesting Habitat/Snapping Turtle Habitat                                    |                        |
|                            | Transformer Substation                    | Landbird Migratory Stopover   | Turtle Habitat 30m Buffer   |                        |

**Notes**

- Coordinate System: NAD 1983 UTM Zone 17N).
- Base features produced under license with the Ontario Ministry of Natural Resources © Queen's Printer for Ontario, 2011.
- Orthoimagery © First Base Solutions, 2010.



Client/Project  
 Niagara Region Wind Corporation  
 Natural Heritage Assessment Report

Figure No.  
 6.3

Title  
**Candidate Significant  
 Wildlife Habitat  
 Figure 6.3**



V:\01609\Active\160950269\planning\drawing\mxd\20130212\_REA\_NHA\_Figures\160950269\_Figure\_6\_Candidate\_Significant\_Wildlife\_Habitat\_Mapbook.mxd  
 Revised: 2013-03-14 By: pwersell

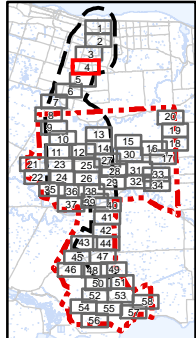


**Legend**

- |                            |   |                               |   |                        |
|----------------------------|---|-------------------------------|---|------------------------|
| Project Study Area         | Preferred Transmission Route              | Amphibian Breeding Stations   | Other Rare Vegetation Community   | Turtle Wintering Area  |
| Interconnector Study Area  | Alternate Transmission Route              | Snake Hibernacula             | Amphibian Breeding Habitat  | Bat Maternity Colonies |
| 120m Zone of Investigation | Temporary Laydown Area                    | Snake Hibernacula 30m Buffer  | Cliff and Talus Communities   |                        |
| Proposed Turbine Location  | Collector Lines – Underground or Overhead | MBB Point Count Location      | Raptor Wintering Areas  |                        |
| Turbine Blade Length       | Fibre Optic Line                          | Migratory Bird Transect       | Woodland Raptor Nesting Habitat/<br>Woodland Area Sensitive Bird Breeding Habitat |                        |
| Tap-in Location            | Potential Access Road                     | Winter Raptor Transect        | Woodland Vole Habitat   |                        |
| Junction Box               | Access Road 20m Construction Area         | Woodland Communities          | Terrestrial Crayfish Habitat  |                        |
| Proposed Culvert           | Potential Construction Laydown Area       | Deer Congregation Areas (MNR) | Turtle Nesting Habitat/Snapping Turtle Habitat                                    |                        |
|                            | Transformer Substation                    | Landbird Migratory Stopover   | Turtle Habitat 30m Buffer   |                        |

**Notes**

- Coordinate System: NAD 1983 UTM Zone 17N).
- Base features produced under license with the Ontario Ministry of Natural Resources © Queen's Printer for Ontario, 2011.
- Orthoimagery © First Base Solutions, 2010.



Client/Project  
 Niagara Region Wind Corporation  
 Natural Heritage Assessment Report

Figure No.  
 6.4

Title  
**Candidate Significant  
 Wildlife Habitat  
 Figure 6.4**



V:\01609\Active\160950269\planning\drawing\mxd\20130212\_REA\_NHA\_Figures\160950269\_Figure\_6\_Candidate\_Significant\_Wildlife\_Habitat\_Mapbook.mxd  
 Revised: 2013-03-14 By: pwersell

March, 2013  
160950269

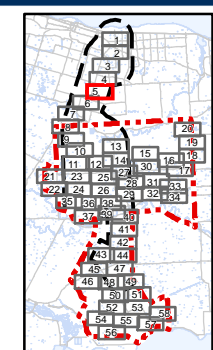


**Legend**

- |                            |   |                               |   |                        |
|----------------------------|---|-------------------------------|---|------------------------|
| Project Study Area         | Preferred Transmission Route              | Amphibian Breeding Stations   | Other Rare Vegetation Community   | Turtle Wintering Area  |
| Interconnector Study Area  | Alternate Transmission Route              | Snake Hibernacula             | Amphibian Breeding Habitat  | Bat Maternity Colonies |
| 120m Zone of Investigation | Temporary Laydown Area                    | Snake Hibernacula 30m Buffer  | Cliff and Talus Communities   |                        |
| Proposed Turbine Location  | Collector Lines – Underground or Overhead | MBB Point Count Location      | Raptor Wintering Areas  |                        |
| Turbine Blade Length       | Fibre Optic Line                          | Migratory Bird Transect       | Woodland Raptor Nesting Habitat/<br>Woodland Area Sensitive Bird Breeding Habitat |                        |
| Tap-in Location            | Potential Access Road                     | Winter Raptor Transect        | Woodland Vole Habitat   |                        |
| Junction Box               | Access Road 20m Construction Area         | Woodland Communities          | Terrestrial Crayfish Habitat  |                        |
| Proposed Culvert           | Potential Construction Laydown Area       | Deer Congregation Areas (MNR) | Turtle Nesting Habitat/Snapping Turtle Habitat                                    |                        |
|                            | Transformer Substation                    | Landbird Migratory Stopover   | Turtle Habitat 30m Buffer   |                        |

**Notes**

- Coordinate System: NAD 1983 UTM Zone 17N).
- Base features produced under license with the Ontario Ministry of Natural Resources © Queen's Printer for Ontario, 2011.
- Orthoimagery © First Base Solutions, 2010.



Client/Project  
Niagara Region Wind Corporation  
Natural Heritage Assessment Report

Figure No.  
6.5

Title  
**Candidate Significant  
Wildlife Habitat  
Figure 6.5**



V:\01600\Active\160950269\planning\drawing\mxd\20130212\_REA\_NHA\_Figures\160950269\_Figure\_6\_Candidate\_Significant\_Wildlife\_Habitat\_Mapbook.mxd  
 Revised: 2013-03-14 By: pwersell

March, 2013  
160950269

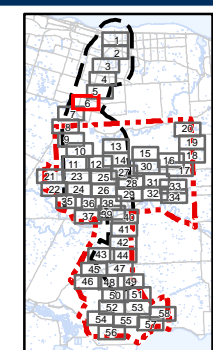


**Legend**

- |                            |   |                               |   |                        |
|----------------------------|---|-------------------------------|---|------------------------|
| Project Study Area         | Preferred Transmission Route              | Amphibian Breeding Stations   | Other Rare Vegetation Community   | Turtle Wintering Area  |
| Interconnector Study Area  | Alternate Transmission Route              | Snake Hibernacula             | Amphibian Breeding Habitat  | Bat Maternity Colonies |
| 120m Zone of Investigation | Temporary Laydown Area                    | Snake Hibernacula 30m Buffer  | Cliff and Talus Communities   |                        |
| Proposed Turbine Location  | Collector Lines – Underground or Overhead | MBB Point Count Location      | Raptor Wintering Areas  |                        |
| Turbine Blade Length       | Fibre Optic Line                          | Migratory Bird Transect       | Woodland Raptor Nesting Habitat/<br>Woodland Area Sensitive Bird Breeding Habitat |                        |
| Tap-in Location            | Potential Access Road                     | Winter Raptor Transect        | Woodland Vole Habitat   |                        |
| Junction Box               | Access Road 20m Construction Area         | Woodland Communities          | Terrestrial Crayfish Habitat  |                        |
| Proposed Culvert           | Potential Construction Laydown Area       | Deer Congregation Areas (MNR) | Turtle Nesting Habitat/Snapping Turtle Habitat                                    |                        |
|                            | Transformer Substation                    | Landbird Migratory Stopover   | Turtle Habitat 30m Buffer   |                        |

**Notes**

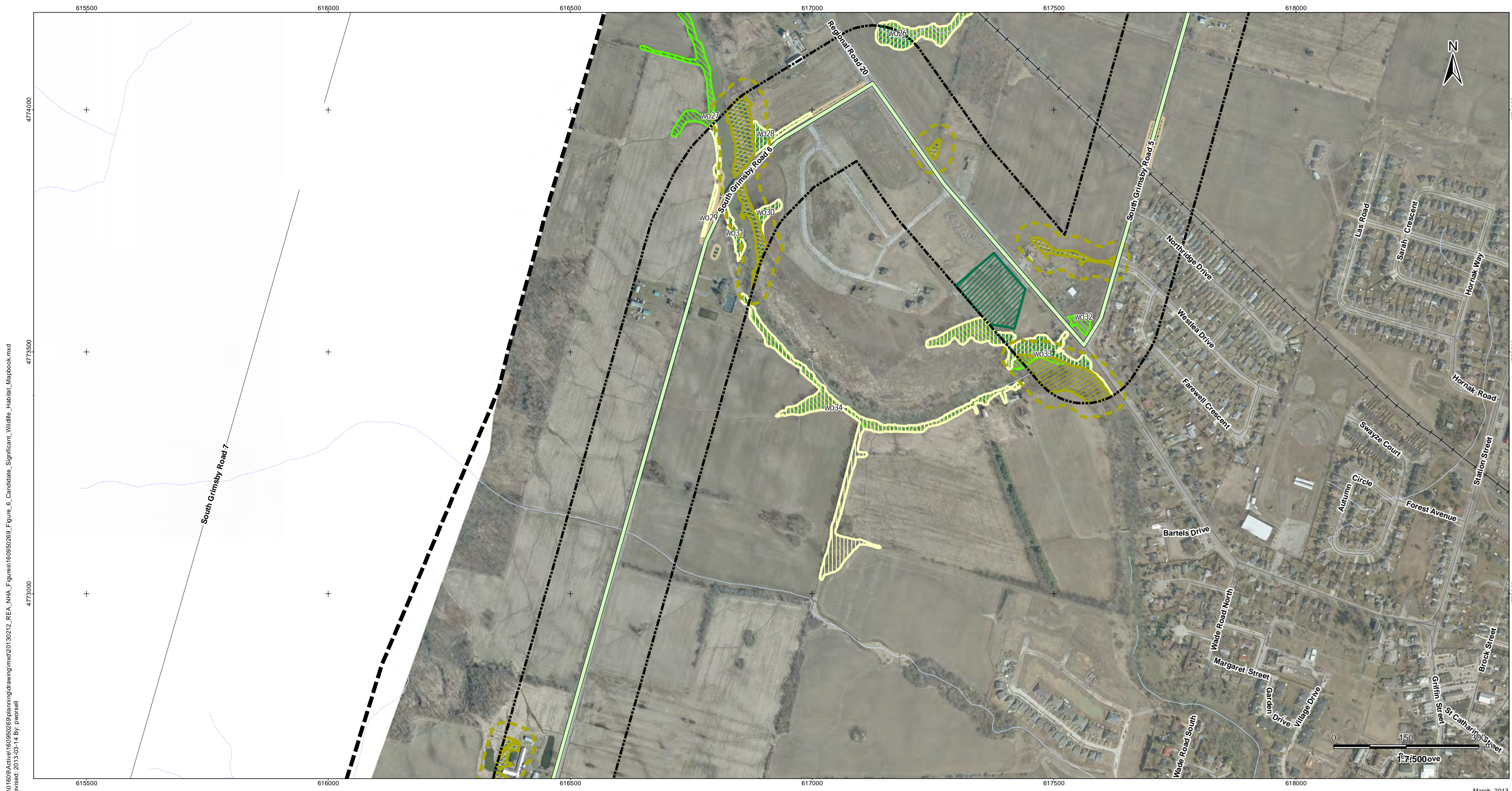
- Coordinate System: NAD 1983 UTM Zone 17N).
- Base features produced under license with the Ontario Ministry of Natural Resources © Queen's Printer for Ontario, 2011.
- Orthoimagery © First Base Solutions, 2010.



Client/Project  
 Niagara Region Wind Corporation  
 Natural Heritage Assessment Report

Figure No.  
 6.6

Title  
**Candidate Significant  
 Wildlife Habitat  
 Figure 6.6**



V:\01609\Active\160950269\planning\drawing\mxd\20130212\_REA\_NHA\_Figures\160950269\_Figure\_6\_Candidate\_Significant\_Wildlife\_Habitat\_Mapbook.mxd  
 Revised: 2013-03-14 By: pwersell

March, 2013  
160950269

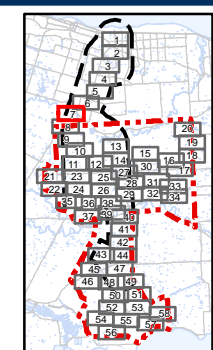


**Legend**

- |                            |   |                               |   |                        |
|----------------------------|---|-------------------------------|---|------------------------|
| Project Study Area         | Preferred Transmission Route              | Amphibian Breeding Stations   | Other Rare Vegetation Community   | Turtle Wintering Area  |
| Interconnector Study Area  | Alternate Transmission Route              | Snake Hibernacula             | Amphibian Breeding Habitat  | Bat Maternity Colonies |
| 120m Zone of Investigation | Temporary Laydown Area                    | Snake Hibernacula 30m Buffer  | Cliff and Talus Communities   |                        |
| Proposed Turbine Location  | Collector Lines – Underground or Overhead | MBB Point Count Location      | Raptor Wintering Areas  |                        |
| Turbine Blade Length       | Fibre Optic Line                          | Migratory Bird Transect       | Woodland Raptor Nesting Habitat/<br>Woodland Area Sensitive Bird Breeding Habitat |                        |
| Tap-in Location            | Potential Access Road                     | Winter Raptor Transect        | Woodland Vole Habitat   |                        |
| Junction Box               | Access Road 20m Construction Area         | Woodland Communities          | Terrestrial Crayfish Habitat  |                        |
| Proposed Culvert           | Potential Construction Laydown Area       | Deer Congregation Areas (MNR) | Turtle Nesting Habitat/Snapping Turtle Habitat                                    |                        |
|                            | Transformer Substation                    | Landbird Migratory Stopover   | Turtle Habitat 30m Buffer   |                        |

**Notes**

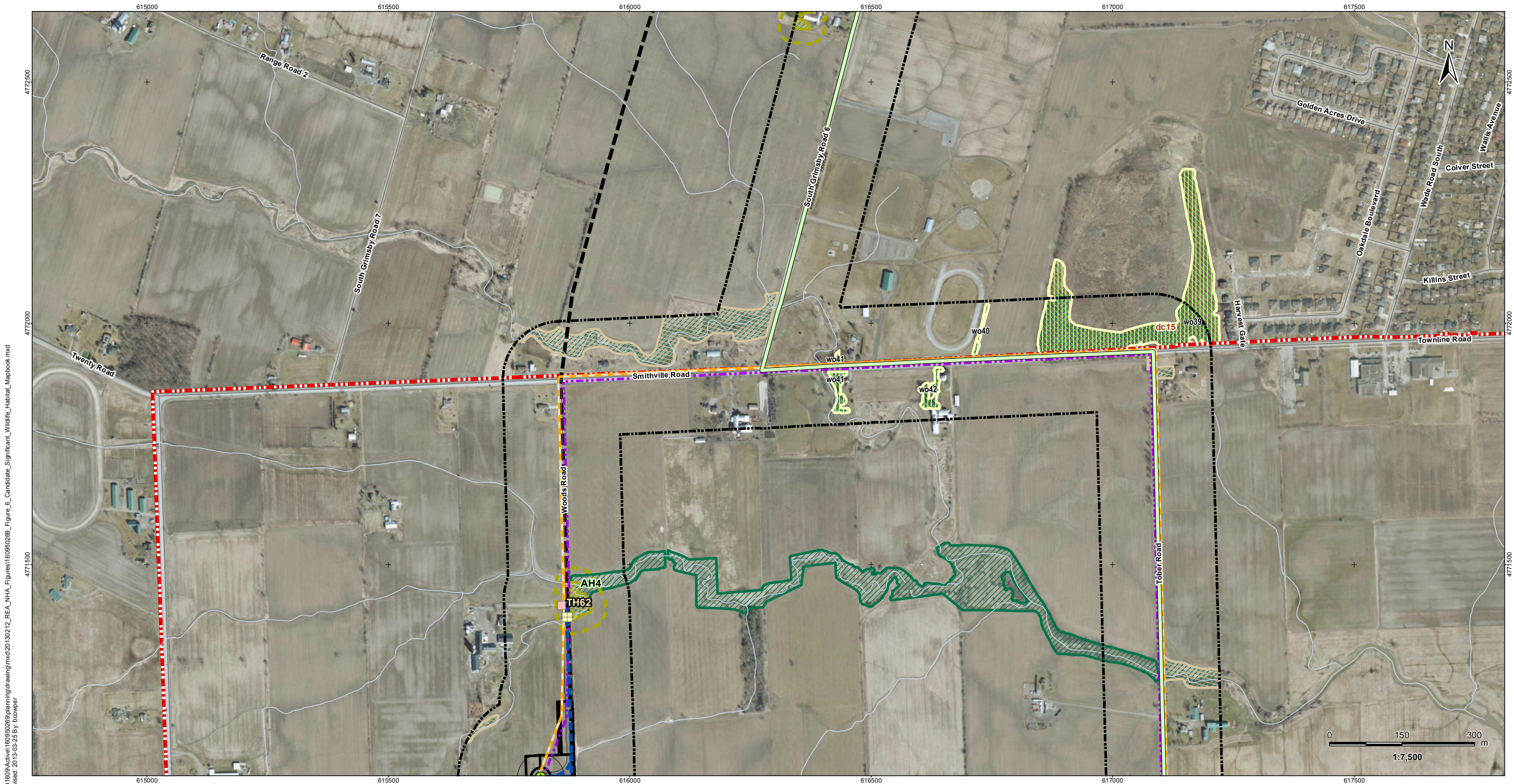
- Coordinate System: NAD 1983 UTM Zone 17N).
- Base features produced under license with the Ontario Ministry of Natural Resources © Queen's Printer for Ontario, 2011.
- Orthoimagery © First Base Solutions, 2010.



Client/Project  
 Niagara Region Wind Corporation  
 Natural Heritage Assessment Report

Figure No.  
 6.7

Title  
**Candidate Significant  
 Wildlife Habitat  
 Figure 6.7**



V:\01609\Active\160950269\planning\drawing\mxd\20130212\_REA\_NHA\_Figures\160950269\_Figure\_6\_Candidate\_Significant\_Wildlife\_Habitat\_Mapbook.mxd  
 Revised: 2013-09-25 By: bcooper

March, 2013  
160950269

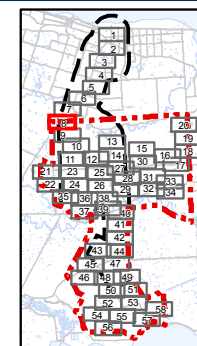


### Legend

- |                            |   |                               |   |                        |
|----------------------------|---|-------------------------------|---|------------------------|
| Project Study Area         | Preferred Transmission Route              | Amphibian Breeding Stations   | Other Rare Vegetation Community   | Turtle Wintering Area  |
| Interconnector Study Area  | Alternate Transmission Route              | Snake Hibernacula             | Amphibian Breeding Habitat  | Bat Maternity Colonies |
| 120m Zone of Investigation | Temporary Laydown Area                    | Snake Hibernacula 30m Buffer  | Cliff and Talus Communities   |                        |
| Proposed Turbine Location  | Collector Lines – Underground or Overhead | MBB Point Count Location      | Raptor Wintering Areas  |                        |
| Turbine Blade Length       | Fibre Optic Line                          | Migratory Bird Transect       | Woodland Raptor Nesting Habitat/<br>Woodland Area Sensitive Bird Breeding Habitat |                        |
| Tap-in Location            | Potential Access Road                     | Winter Raptor Transect        | Woodland Vole Habitat   |                        |
| Junction Box               | Access Road 20m Construction Area         | Woodland Communities          | Terrestrial Crayfish Habitat  |                        |
| Proposed Culvert           | Potential Construction Laydown Area       | Deer Congregation Areas (MNR) | Turtle Nesting Habitat/Snapping Turtle Habitat                                    |                        |
|                            | Transformer Substation                    | Landbird Migratory Stopover   | Turtle Habitat 30m Buffer   |                        |

### Notes

- Coordinate System: NAD 1983 UTM Zone 17N).
- Base features produced under license with the Ontario Ministry of Natural Resources © Queen's Printer for Ontario, 2011.
- Orthoimagery © First Base Solutions, 2010.



Client/Project

Niagara Region Wind Corporation  
Natural Heritage Assessment Report

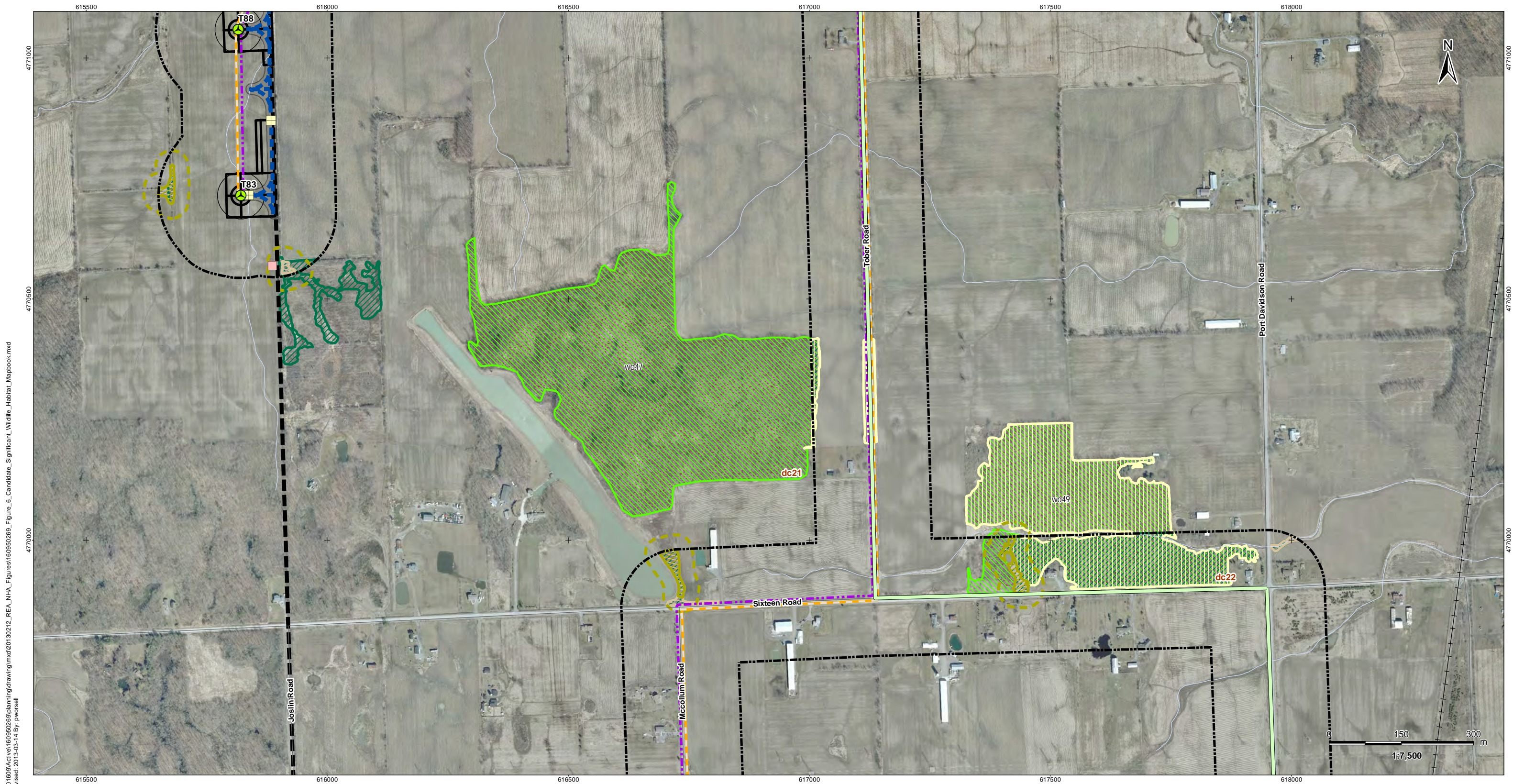
Figure No.

6.8

Title

**Candidate Significant  
Wildlife Habitat  
Figure 6.8**





V:\01609\Active\160950269\planning\drawing\mxd\20130212\_REA\_NHA\_Figures\160950269\_Figure\_6\_Candidate\_Significant\_Wildlife\_Habitat\_Mapbook.mxd  
 Revised: 2013-03-14 By: pwersell

March, 2013  
160950269

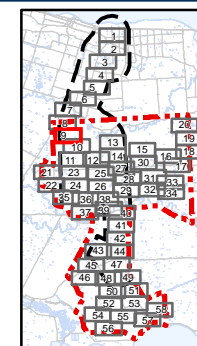


### Legend

- |                            |   |                               |   |                        |
|----------------------------|---|-------------------------------|---|------------------------|
| Project Study Area         | Preferred Transmission Route              | Amphibian Breeding Stations   | Other Rare Vegetation Community   | Turtle Wintering Area  |
| Interconnector Study Area  | Alternate Transmission Route              | Snake Hibernacula             | Amphibian Breeding Habitat  | Bat Maternity Colonies |
| 120m Zone of Investigation | Temporary Laydown Area                    | Snake Hibernacula 30m Buffer  | Cliff and Talus Communities   |                        |
| Proposed Turbine Location  | Collector Lines – Underground or Overhead | MBB Point Count Location      | Raptor Wintering Areas  |                        |
| Turbine Blade Length       | Fibre Optic Line                          | Migratory Bird Transect       | Woodland Raptor Nesting Habitat/<br>Woodland Area Sensitive Bird Breeding Habitat |                        |
| Tap-in Location            | Potential Access Road                     | Winter Raptor Transect        | Woodland Vole Habitat   |                        |
| Junction Box               | Access Road 20m Construction Area         | Woodland Communities          | Terrestrial Crayfish Habitat  |                        |
| Proposed Culvert           | Potential Construction Laydown Area       | Deer Congregation Areas (MNR) | Turtle Nesting Habitat/Snapping Turtle Habitat                                    |                        |
|                            | Transformer Substation                    | Landbird Migratory Stopover   | Turtle Habitat 30m Buffer   |                        |

### Notes

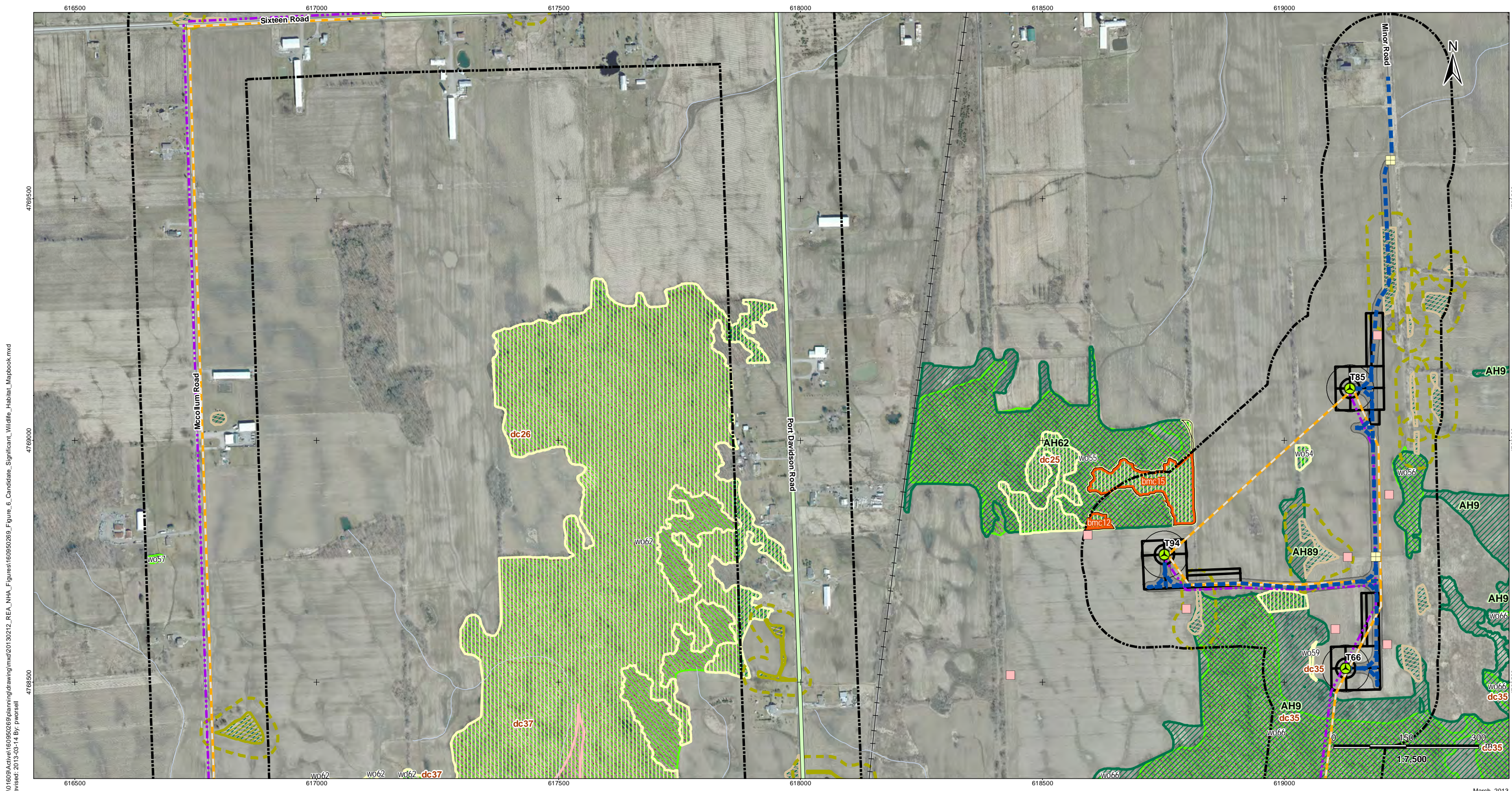
- Coordinate System: NAD 1983 UTM Zone 17N).
- Base features produced under license with the Ontario Ministry of Natural Resources © Queen's Printer for Ontario, 2011.
- Orthoimagery © First Base Solutions, 2010.



Client/Project  
Niagara Region Wind Corporation  
Natural Heritage Assessment Report

Figure No.  
6.9

Title  
**Candidate Significant  
Wildlife Habitat  
Figure 6.9**



V:\01609\Active\160950269\planning\drawing\mxd\20130212\_REA\_NHA\_Figures\160950269\_Figure\_6\_Candidate\_Significant\_Wildlife\_Habitat\_Mapbook.mxd  
 Revised: 2013-03-14 By: pwersell

March, 2013  
160950269

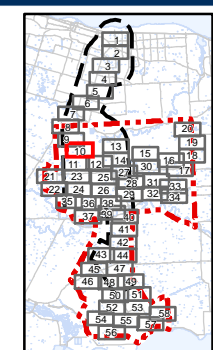


**Legend**

- |                            |   |                               |   |                        |
|----------------------------|---|-------------------------------|---|------------------------|
| Project Study Area         | Preferred Transmission Route              | Amphibian Breeding Stations   | Other Rare Vegetation Community   | Turtle Wintering Area  |
| Interconnector Study Area  | Alternate Transmission Route              | Snake Hibernacula             | Amphibian Breeding Habitat  | Bat Maternity Colonies |
| 120m Zone of Investigation | Temporary Laydown Area                    | Snake Hibernacula 30m Buffer  | Cliff and Talus Communities   |                        |
| Proposed Turbine Location  | Collector Lines – Underground or Overhead | MBB Point Count Location      | Raptor Wintering Areas  |                        |
| Turbine Blade Length       | Fibre Optic Line                          | Migratory Bird Transect       | Woodland Raptor Nesting Habitat/<br>Woodland Area Sensitive Bird Breeding Habitat |                        |
| Tap-in Location            | Potential Access Road                     | Winter Raptor Transect        | Woodland Vole Habitat   |                        |
| Junction Box               | Access Road 20m Construction Area         | Woodland Communities          | Terrestrial Crayfish Habitat  |                        |
| Proposed Culvert           | Potential Construction Laydown Area       | Deer Congregation Areas (MNR) | Turtle Nesting Habitat/Snapping Turtle Habitat                                    |                        |
|                            | Transformer Substation                    | Landbird Migratory Stopover   | Turtle Habitat 30m Buffer   |                        |

**Notes**

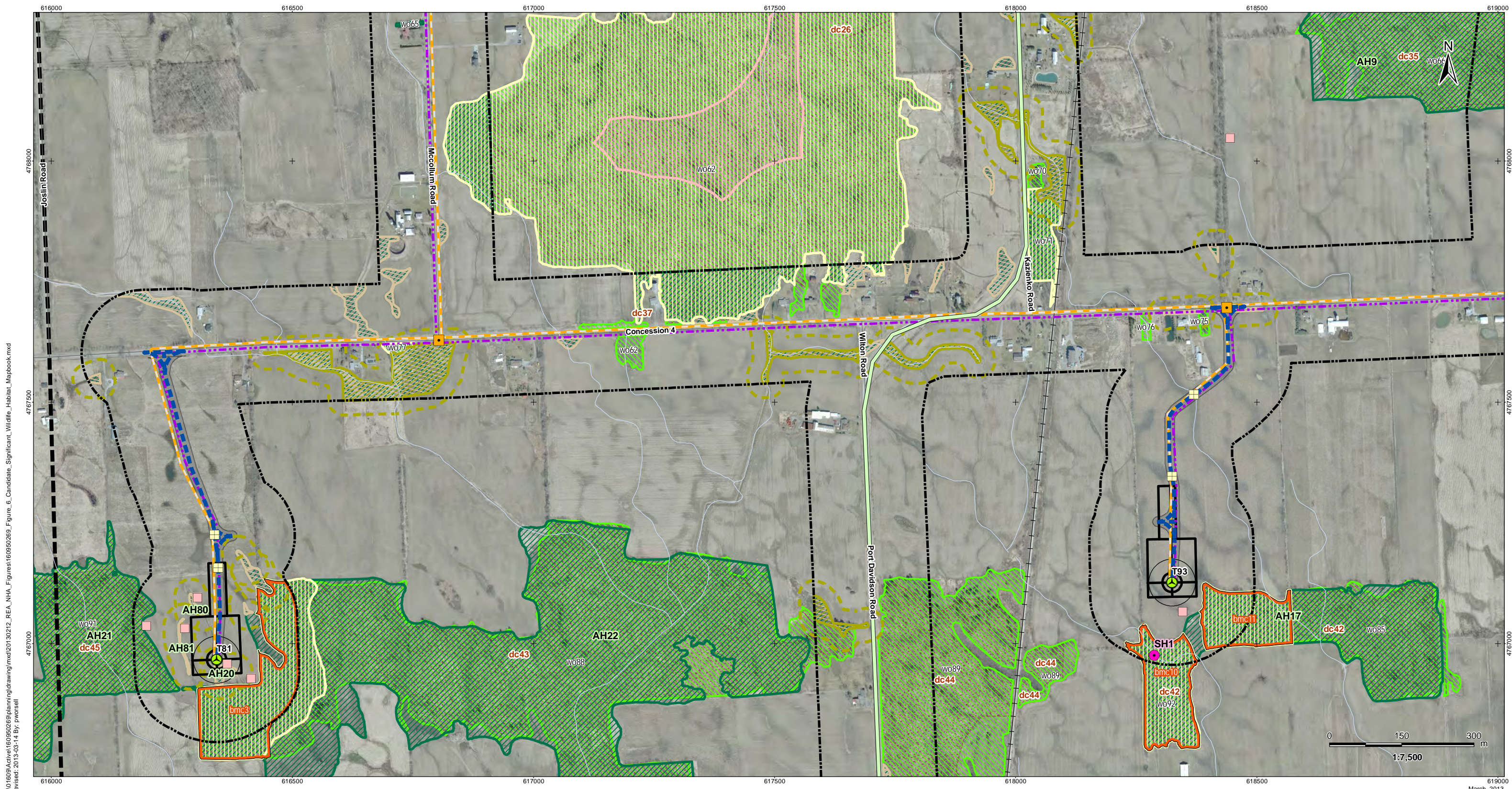
- Coordinate System: NAD 1983 UTM Zone 17N).
- Base features produced under license with the Ontario Ministry of Natural Resources © Queen's Printer for Ontario, 2011.
- Orthoimagery © First Base Solutions, 2010.



Client/Project  
 Niagara Region Wind Corporation  
 Natural Heritage Assessment Report

Figure No.  
 6.10

Title  
**Candidate Significant  
 Wildlife Habitat  
 Figure 6.10**



619000  
March, 2013  
160950269

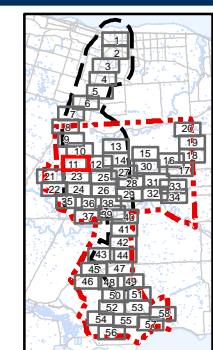


### Legend

- |                            |   |                               |   |                        |
|----------------------------|---|-------------------------------|---|------------------------|
| Project Study Area         | Preferred Transmission Route              | Amphibian Breeding Stations   | Other Rare Vegetation Community   | Turtle Wintering Area  |
| Interconnector Study Area  | Alternate Transmission Route              | Snake Hibernacula             | Amphibian Breeding Habitat  | Bat Maternity Colonies |
| 120m Zone of Investigation | Temporary Laydown Area                    | Snake Hibernacula 30m Buffer  | Cliff and Talus Communities   |                        |
| Proposed Turbine Location  | Collector Lines – Underground or Overhead | MBB Point Count Location      | Raptor Wintering Areas  |                        |
| Turbine Blade Length       | Fibre Optic Line                          | Migratory Bird Transect       | Woodland Raptor Nesting Habitat/<br>Woodland Area Sensitive Bird Breeding Habitat |                        |
| Tap-in Location            | Potential Access Road                     | Winter Raptor Transect        | Woodland Vole Habitat   |                        |
| Junction Box               | Access Road 20m Construction Area         | Woodland Communities          | Terrestrial Crayfish Habitat  |                        |
| Proposed Culvert           | Potential Construction Laydown Area       | Deer Congregation Areas (MNR) | Turtle Nesting Habitat/Snapping Turtle Habitat                                    |                        |
|                            | Transformer Substation                    | Landbird Migratory Stopover   | Turtle Habitat 30m Buffer   |                        |

### Notes

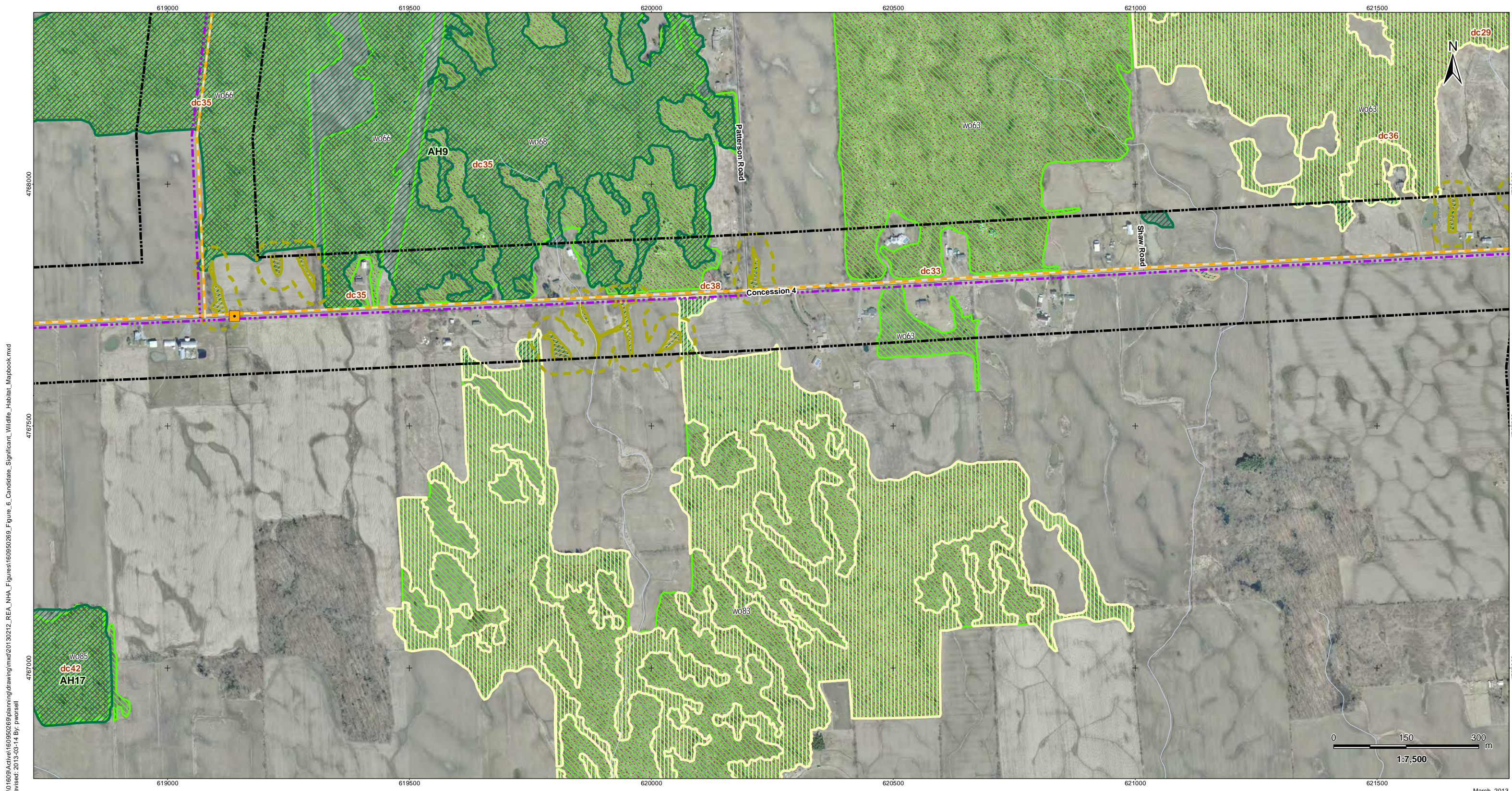
- Coordinate System: NAD 1983 UTM Zone 17N).
- Base features produced under license with the Ontario Ministry of Natural Resources © Queen's Printer for Ontario, 2011.
- Orthoimagery © First Base Solutions, 2010.



Client/Project  
 Niagara Region Wind Corporation  
 Natural Heritage Assessment Report

Figure No.  
 6.11

Title  
**Candidate Significant  
 Wildlife Habitat  
 Figure 6.11**



V:\01609\Active\160950269\planning\drawing\mxd\20130212\_REA\_NHA\_Figures\160950269\_Figure\_6\_Candidate\_Significant\_Wildlife\_Habitat\_Mapbook.mxd  
 Revised: 2013-03-14 By: pwersell

March, 2013  
160950269

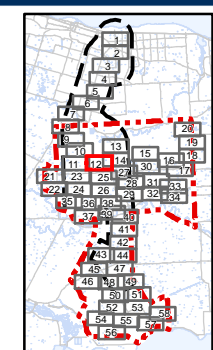


**Legend**

- |                            |   |                               |   |                        |
|----------------------------|---|-------------------------------|---|------------------------|
| Project Study Area         | Preferred Transmission Route              | Amphibian Breeding Stations   | Other Rare Vegetation Community   | Turtle Wintering Area  |
| Interconnector Study Area  | Alternate Transmission Route              | Snake Hibernacula             | Amphibian Breeding Habitat  | Bat Maternity Colonies |
| 120m Zone of Investigation | Temporary Laydown Area                    | Snake Hibernacula 30m Buffer  | Cliff and Talus Communities   |                        |
| Proposed Turbine Location  | Collector Lines – Underground or Overhead | MBB Point Count Location      | Raptor Wintering Areas  |                        |
| Turbine Blade Length       | Fibre Optic Line                          | Migratory Bird Transect       | Woodland Raptor Nesting Habitat/<br>Woodland Area Sensitive Bird Breeding Habitat |                        |
| Tap-in Location            | Potential Access Road                     | Winter Raptor Transect        | Woodland Vole Habitat   |                        |
| Junction Box               | Access Road 20m Construction Area         | Woodland Communities          | Terrestrial Crayfish Habitat  |                        |
| Proposed Culvert           | Potential Construction Laydown Area       | Deer Congregation Areas (MNR) | Turtle Nesting Habitat/Snapping Turtle Habitat                                    |                        |
|                            | Transformer Substation                    | Landbird Migratory Stopover   | Turtle Habitat 30m Buffer   |                        |

**Notes**

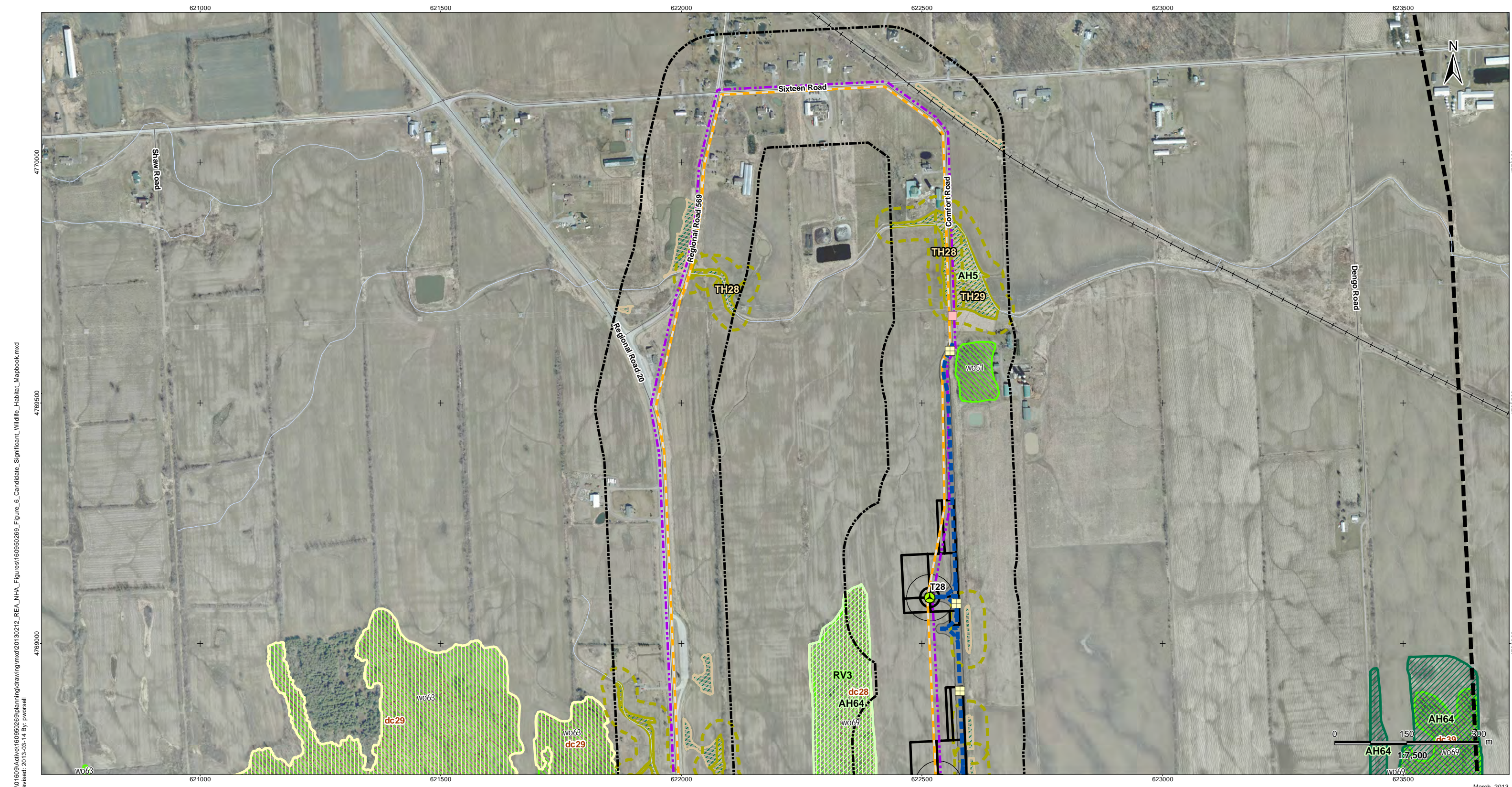
- Coordinate System: NAD 1983 UTM Zone 17N).
- Base features produced under license with the Ontario Ministry of Natural Resources © Queen's Printer for Ontario, 2011.
- Orthoimagery © First Base Solutions, 2010.



Client/Project  
 Niagara Region Wind Corporation  
 Natural Heritage Assessment Report

Figure No.  
 6.12

Title  
**Candidate Significant  
 Wildlife Habitat  
 Figure 6.12**



V:\01609\Active\160950269\planning\drawing\mxd\20130212\_REA\_NHA\_Figures\160950269\_Figure\_6\_Candidate\_Significant\_Wildlife\_Habitat\_Mapbook.mxd  
 Revised: 2013-03-14 By: pwersell

March, 2013  
160950269

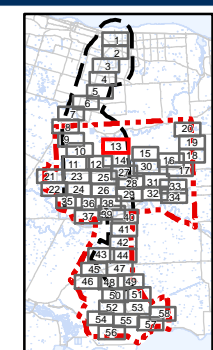


**Legend**

- |                            |   |                               |   |                        |
|----------------------------|---|-------------------------------|---|------------------------|
| Project Study Area         | Preferred Transmission Route              | Amphibian Breeding Stations   | Other Rare Vegetation Community   | Turtle Wintering Area  |
| Interconnector Study Area  | Alternate Transmission Route              | Snake Hibernacula             | Amphibian Breeding Habitat  | Bat Maternity Colonies |
| 120m Zone of Investigation | Temporary Laydown Area                    | Snake Hibernacula 30m Buffer  | Cliff and Talus Communities   |                        |
| Proposed Turbine Location  | Collector Lines – Underground or Overhead | MBB Point Count Location      | Raptor Wintering Areas  |                        |
| Turbine Blade Length       | Fibre Optic Line                          | Migratory Bird Transect       | Woodland Raptor Nesting Habitat/<br>Woodland Area Sensitive Bird Breeding Habitat |                        |
| Tap-in Location            | Potential Access Road                     | Winter Raptor Transect        | Woodland Vole Habitat   |                        |
| Junction Box               | Access Road 20m Construction Area         | Woodland Communities          | Terrestrial Crayfish Habitat  |                        |
| Proposed Culvert           | Potential Construction Laydown Area       | Deer Congregation Areas (MNR) | Turtle Nesting Habitat/Snapping Turtle Habitat                                    |                        |
|                            | Transformer Substation                    | Landbird Migratory Stopover   | Turtle Habitat 30m Buffer   |                        |

**Notes**

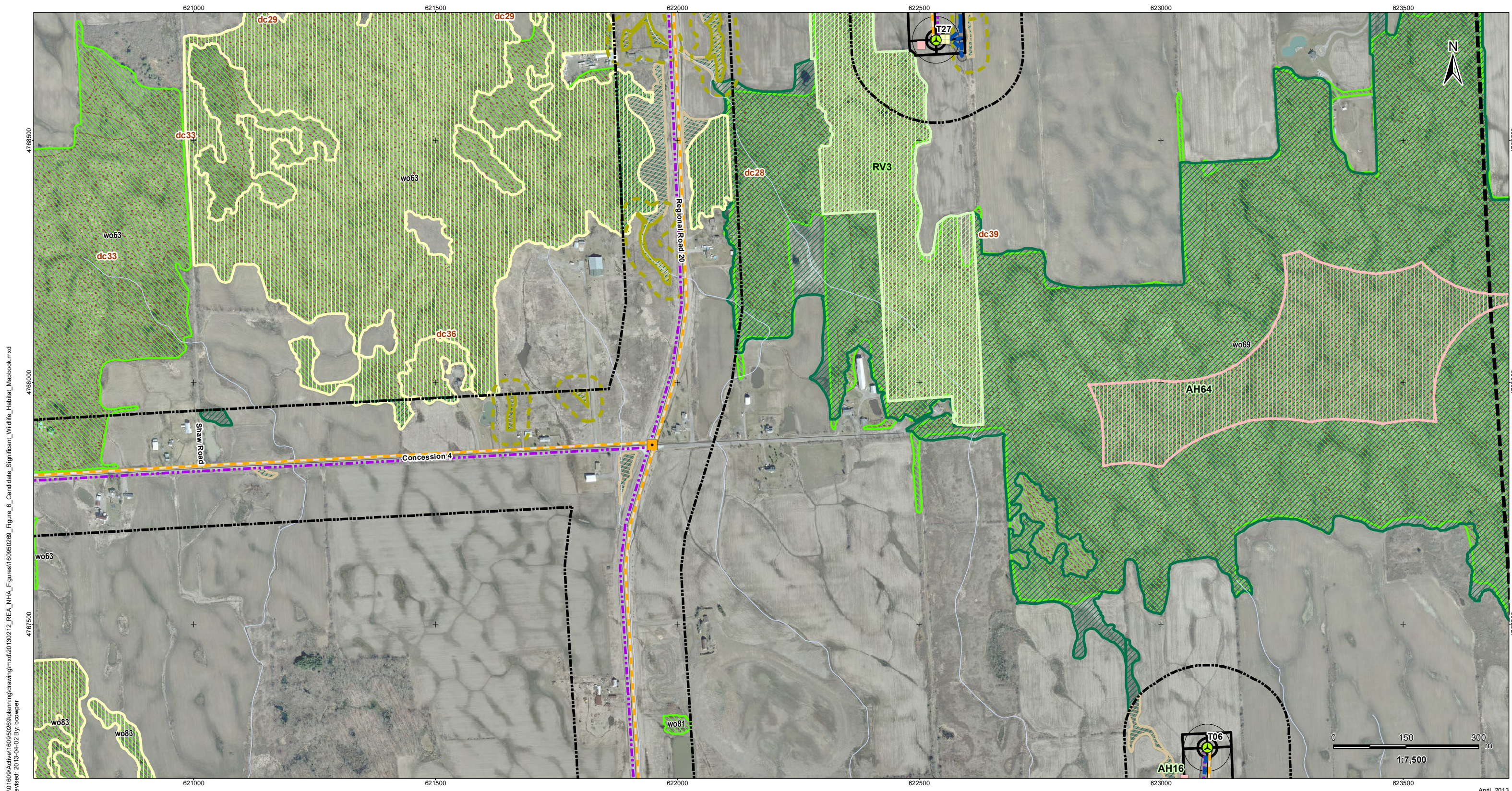
- Coordinate System: NAD 1983 UTM Zone 17N).
- Base features produced under license with the Ontario Ministry of Natural Resources © Queen's Printer for Ontario, 2011.
- Orthoimagery © First Base Solutions, 2010.



Client/Project  
 Niagara Region Wind Corporation  
 Natural Heritage Assessment Report

Figure No.  
 6.13

Title  
**Candidate Significant  
 Wildlife Habitat  
 Figure 6.13**



V:\01609\Archives\160950269\planning\drawing\mxd\20130212\_REA\_NHA\_Figures\160950269\_Figure\_6\_Candidate\_Significant\_Wildlife\_Habitat\_Mapbook.mxd  
 Revised: 2013-04-02 By: bcooper

April, 2013  
160950269

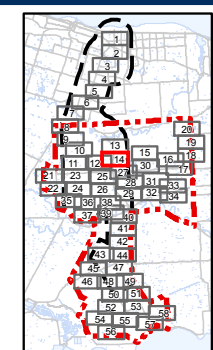


**Legend**

- |                            |   |                               |   |                        |
|----------------------------|---|-------------------------------|---|------------------------|
| Project Study Area         | Preferred Transmission Route              | Amphibian Breeding Stations   | Other Rare Vegetation Community   | Turtle Wintering Area  |
| Interconnector Study Area  | Alternate Transmission Route              | Snake Hibernacula             | Amphibian Breeding Habitat  | Bat Maternity Colonies |
| 120m Zone of Investigation | Temporary Laydown Area                    | Snake Hibernacula 30m Buffer  | Cliff and Talus Communities   |                        |
| Proposed Turbine Location  | Collector Lines – Underground or Overhead | MBB Point Count Location      | Raptor Wintering Areas  |                        |
| Turbine Blade Length       | Fibre Optic Line                          | Migratory Bird Transect       | Woodland Raptor Nesting Habitat/<br>Woodland Area Sensitive Bird Breeding Habitat |                        |
| Tap-in Location            | Potential Access Road                     | Winter Raptor Transect        | Woodland Vole Habitat   |                        |
| Junction Box               | Access Road 20m Construction Area         | Woodland Communities          | Terrestrial Crayfish Habitat  |                        |
| Proposed Culvert           | Potential Construction Laydown Area       | Deer Congregation Areas (MNR) | Turtle Nesting Habitat/Snapping Turtle Habitat                                    |                        |
|                            | Transformer Substation                    | Landbird Migratory Stopover   | Turtle Habitat 30m Buffer   |                        |

**Notes**

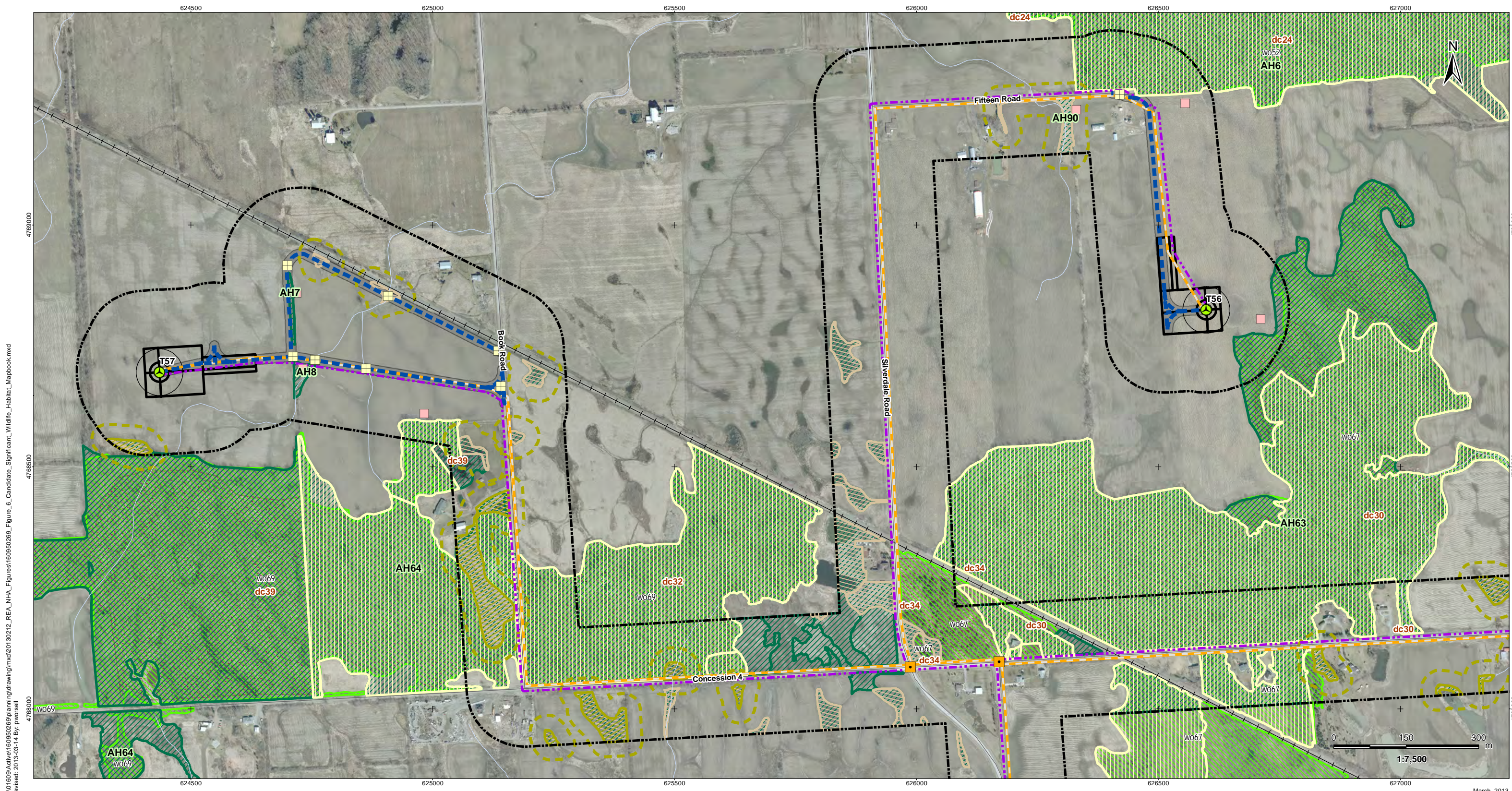
- Coordinate System: NAD 1983 UTM Zone 17N).
- Base features produced under license with the Ontario Ministry of Natural Resources © Queen's Printer for Ontario, 2011.
- Orthoimagery © First Base Solutions, 2010.



Client/Project  
 Niagara Region Wind Corporation  
 Natural Heritage Assessment Report

Figure No.  
 6.14

Title  
 Candidate Significant  
 Wildlife Habitat  
 Figure 6.14



March, 2013  
160950269

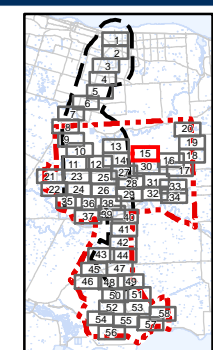


**Legend**

- |                            |   |                               |   |                        |
|----------------------------|---|-------------------------------|---|------------------------|
| Project Study Area         | Preferred Transmission Route              | Amphibian Breeding Stations   | Other Rare Vegetation Community   | Turtle Wintering Area  |
| Interconnector Study Area  | Alternate Transmission Route              | Snake Hibernacula             | Amphibian Breeding Habitat  | Bat Maternity Colonies |
| 120m Zone of Investigation | Temporary Laydown Area                    | Snake Hibernacula 30m Buffer  | Cliff and Talus Communities   |                        |
| Proposed Turbine Location  | Collector Lines – Underground or Overhead | MBB Point Count Location      | Raptor Wintering Areas  |                        |
| Turbine Blade Length       | Fibre Optic Line                          | Migratory Bird Transect       | Woodland Raptor Nesting Habitat/<br>Woodland Area Sensitive Bird Breeding Habitat |                        |
| Tap-in Location            | Potential Access Road                     | Winter Raptor Transect        | Woodland Vole Habitat   |                        |
| Junction Box               | Access Road 20m Construction Area         | Woodland Communities          | Terrestrial Crayfish Habitat  |                        |
| Proposed Culvert           | Potential Construction Laydown Area       | Deer Congregation Areas (MNR) | Turtle Nesting Habitat/Snapping Turtle Habitat                                    |                        |
|                            | Transformer Substation                    | Landbird Migratory Stopover   | Turtle Habitat 30m Buffer   |                        |

**Notes**

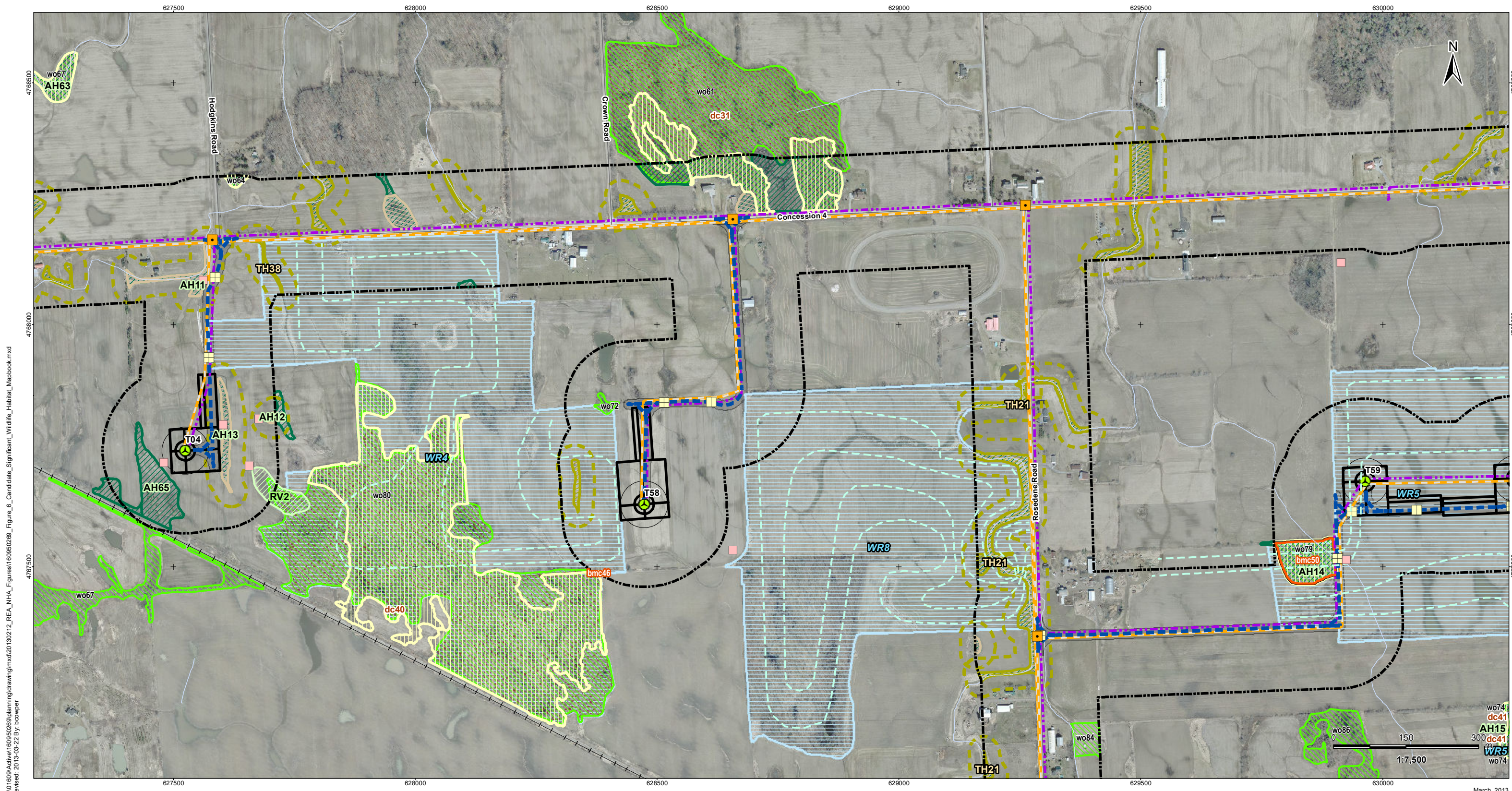
- Coordinate System: NAD 1983 UTM Zone 17N).
- Base features produced under license with the Ontario Ministry of Natural Resources © Queen's Printer for Ontario, 2011.
- Orthoimagery © First Base Solutions, 2010.



Client/Project  
 Niagara Region Wind Corporation  
 Natural Heritage Assessment Report

Figure No.  
 6.15

Title  
**Candidate Significant  
 Wildlife Habitat  
 Figure 6.15**



V:\01609\Active\160950269\plan\drawing\mxd\20130212\_REA\_NHA\_Figures\160950269\_Figure\_6\_Candidate\_Significant\_Wildlife\_Habitat\_Mapbook.mxd  
 Revised: 2013-03-22 By: bcooper

March, 2013  
160950269

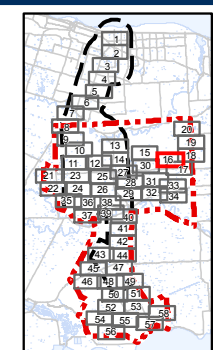


**Legend**

- |                            |   |                               |   |                        |
|----------------------------|---|-------------------------------|---|------------------------|
| Project Study Area         | Preferred Transmission Route              | Amphibian Breeding Stations   | Other Rare Vegetation Community   | Turtle Wintering Area  |
| Interconnector Study Area  | Alternate Transmission Route              | Snake Hibernacula             | Amphibian Breeding Habitat  | Bat Maternity Colonies |
| 120m Zone of Investigation | Temporary Laydown Area                    | Snake Hibernacula 30m Buffer  | Cliff and Talus Communities   |                        |
| Proposed Turbine Location  | Collector Lines – Underground or Overhead | MBB Point Count Location      | Raptor Wintering Areas  |                        |
| Turbine Blade Length       | Fibre Optic Line                          | Migratory Bird Transect       | Woodland Raptor Nesting Habitat/<br>Woodland Area Sensitive Bird Breeding Habitat |                        |
| Tap-in Location            | Potential Access Road                     | Winter Raptor Transect        | Woodland Vole Habitat   |                        |
| Junction Box               | Access Road 20m Construction Area         | Woodland Communities          | Terrestrial Crayfish Habitat  |                        |
| Proposed Culvert           | Potential Construction Laydown Area       | Deer Congregation Areas (MNR) | Turtle Nesting Habitat/Snapping Turtle Habitat                                    |                        |
|                            | Transformer Substation                    | Landbird Migratory Stopover   | Turtle Habitat 30m Buffer   |                        |

**Notes**

- Coordinate System: NAD 1983 UTM Zone 17N).
- Base features produced under license with the Ontario Ministry of Natural Resources © Queen's Printer for Ontario, 2011.
- Orthoimagery © First Base Solutions, 2010.



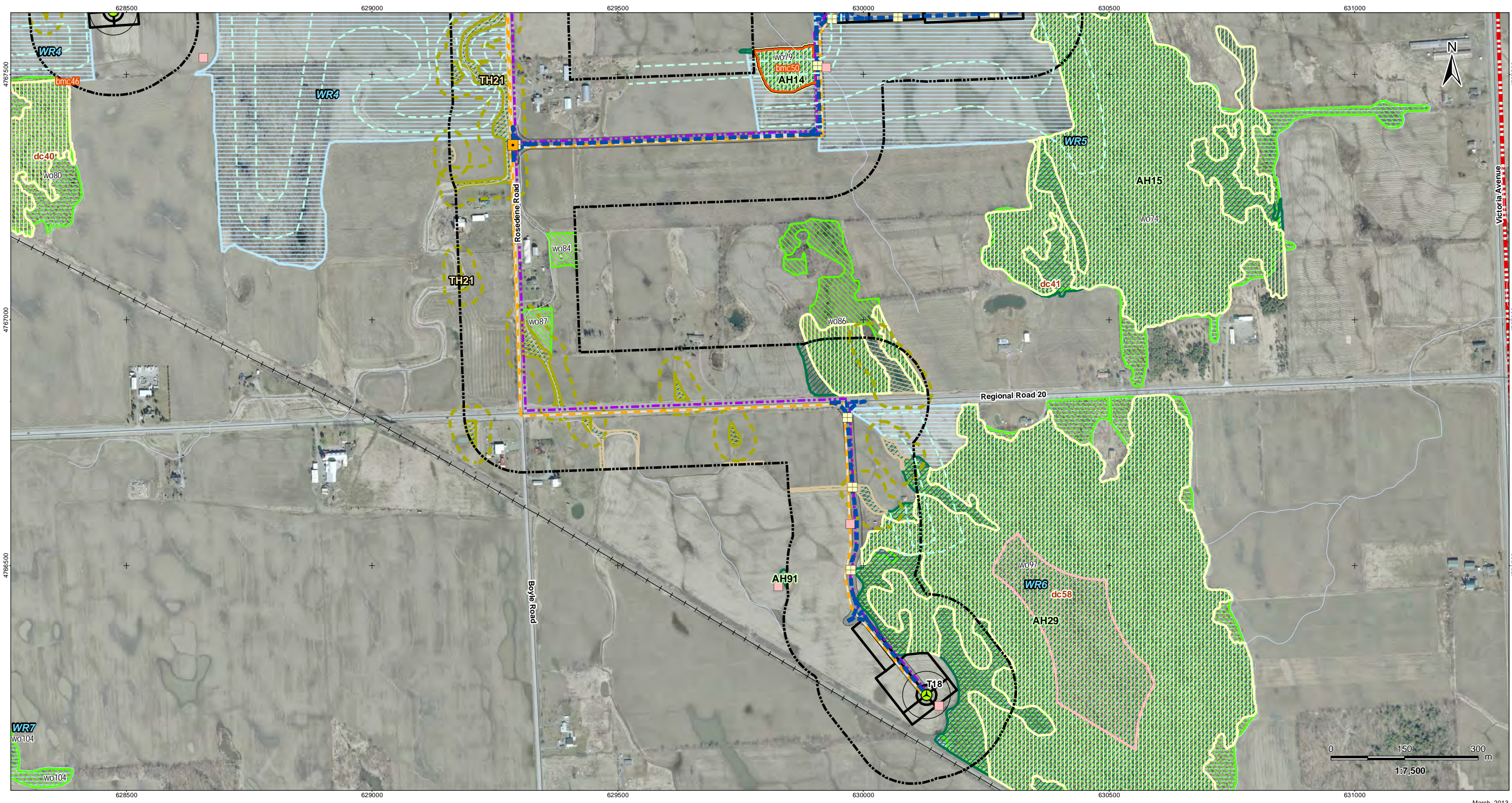
Client/Project  
 Niagara Region Wind Corporation  
 Natural Heritage Assessment Report

Figure No.  
 6.16

Title  
**Candidate Significant  
 Wildlife Habitat  
 Figure 6.16**



I:\01609\Active\160950269\planning\drawing\mxd\20130212\_REA\_NHA\_Figures\160950269\_Figure\_6\_Candidate\_Significant\_Wildlife\_Habitat\_Mapbook.mxd  
 Revised: 2013-03-14 By: pwersell

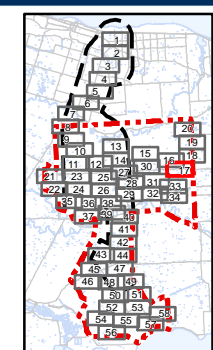


**Legend**

Project Study Area	Preferred Transmission Route	Amphibian Breeding Stations	Other Rare Vegetation Community	Turtle Wintering Area
Interconnector Study Area	Alternate Transmission Route	Snake Hibernacula	Amphibian Breeding Habitat	Bat Maternity Colonies
120m Zone of Investigation	Temporary Laydown Area	Snake Hibernacula 30m Buffer	Cliff and Talus Communities	
Proposed Turbine Location	Collector Lines – Underground or Overhead	MBB Point Count Location	Raptor Wintering Areas	
Turbine Blade Length	Fibre Optic Line	Migratory Bird Transect	Woodland Raptor Nesting Habitat/ Woodland Area Sensitive Bird Breeding Habitat	
Tap-in Location	Potential Access Road	Winter Raptor Transect	Woodland Vole Habitat	
Junction Box	Access Road 20m Construction Area	Woodland Communities	Terrestrial Crayfish Habitat	
Proposed Culvert	Potential Construction Laydown Area	Deer Congregation Areas (MNR)	Turtle Nesting Habitat/Snapping Turtle Habitat	
	Transformer Substation	Landbird Migratory Stopover	Turtle Habitat 30m Buffer	

**Notes**

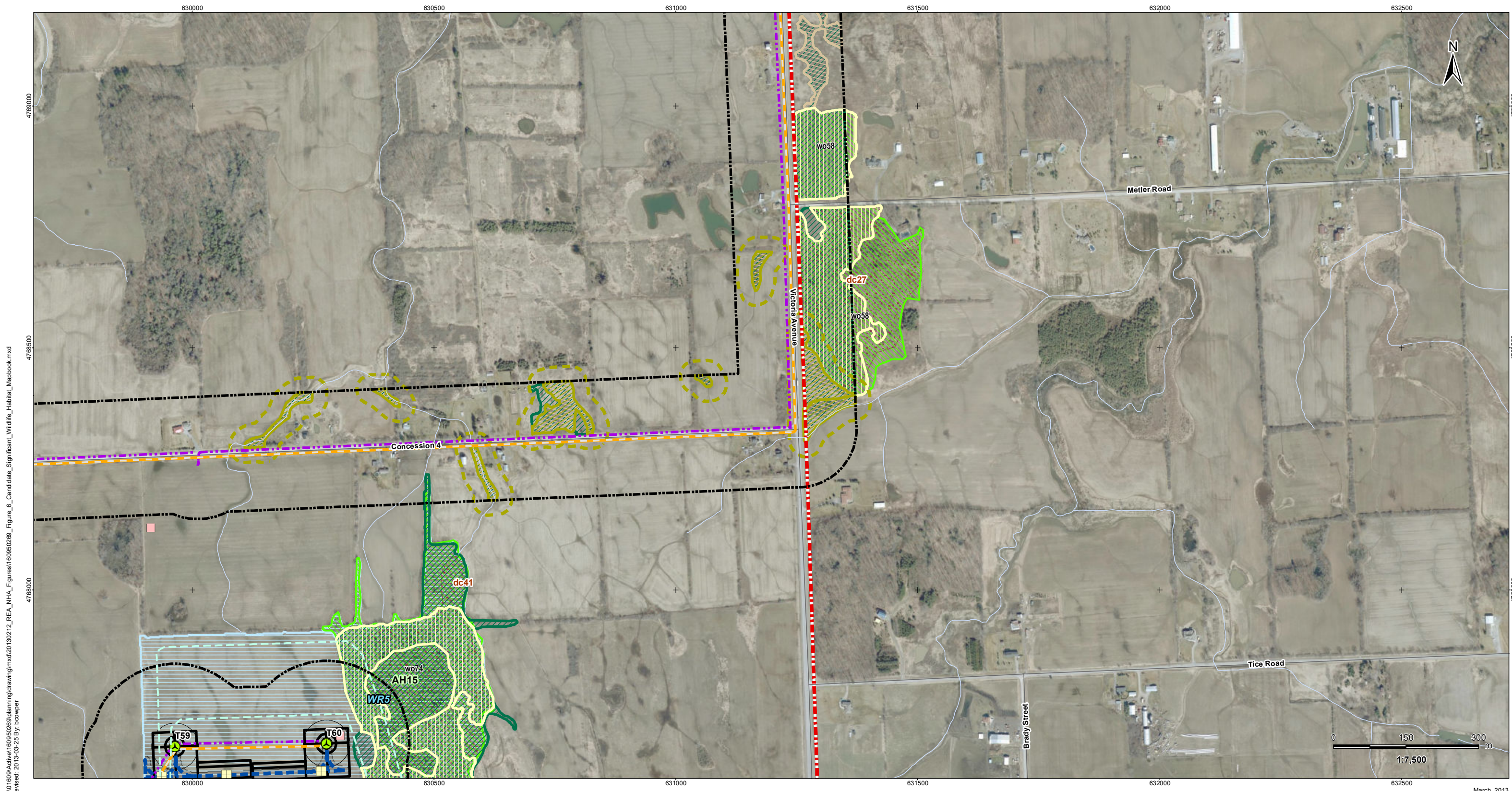
- Coordinate System: NAD 1983 UTM Zone 17N).
- Base features produced under license with the Ontario Ministry of Natural Resources © Queen's Printer for Ontario, 2011.
- Orthoimagery © First Base Solutions, 2010.



Client/Project  
Niagara Region Wind Corporation  
Natural Heritage Assessment Report

Figure No.  
6.17

Title  
**Candidate Significant  
Wildlife Habitat  
Figure 6.17**



V:\01609\Active\160950269\planning\drawing\mxd\20130212\_REA\_NHA\_Figures\160950269\_Figure\_6\_Candidate\_Significant\_Wildlife\_Habitat\_Mapbook.mxd  
 Revised: 2013-03-25 By: bcooper

March, 2013  
160950269

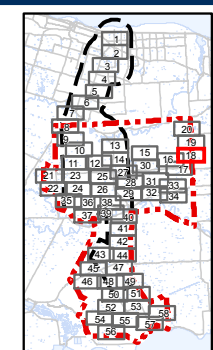


**Legend**

- |                            |   |                               |   |                        |
|----------------------------|---|-------------------------------|---|------------------------|
| Project Study Area         | Preferred Transmission Route              | Amphibian Breeding Stations   | Other Rare Vegetation Community   | Turtle Wintering Area  |
| Interconnector Study Area  | Alternate Transmission Route              | Snake Hibernacula             | Amphibian Breeding Habitat  | Bat Maternity Colonies |
| 120m Zone of Investigation | Temporary Laydown Area                    | Snake Hibernacula 30m Buffer  | Cliff and Talus Communities   |                        |
| Proposed Turbine Location  | Collector Lines – Underground or Overhead | MBB Point Count Location      | Raptor Wintering Areas  |                        |
| Turbine Blade Length       | Fibre Optic Line                          | Migratory Bird Transect       | Woodland Raptor Nesting Habitat/<br>Woodland Area Sensitive Bird Breeding Habitat |                        |
| Tap-in Location            | Potential Access Road                     | Winter Raptor Transect        | Woodland Vole Habitat   |                        |
| Junction Box               | Access Road 20m Construction Area         | Woodland Communities          | Terrestrial Crayfish Habitat  |                        |
| Proposed Culvert           | Potential Construction Laydown Area       | Deer Congregation Areas (MNR) | Turtle Nesting Habitat/Snapping Turtle Habitat                                    |                        |
|                            | Transformer Substation                    | Landbird Migratory Stopover   | Turtle Habitat 30m Buffer   |                        |

**Notes**

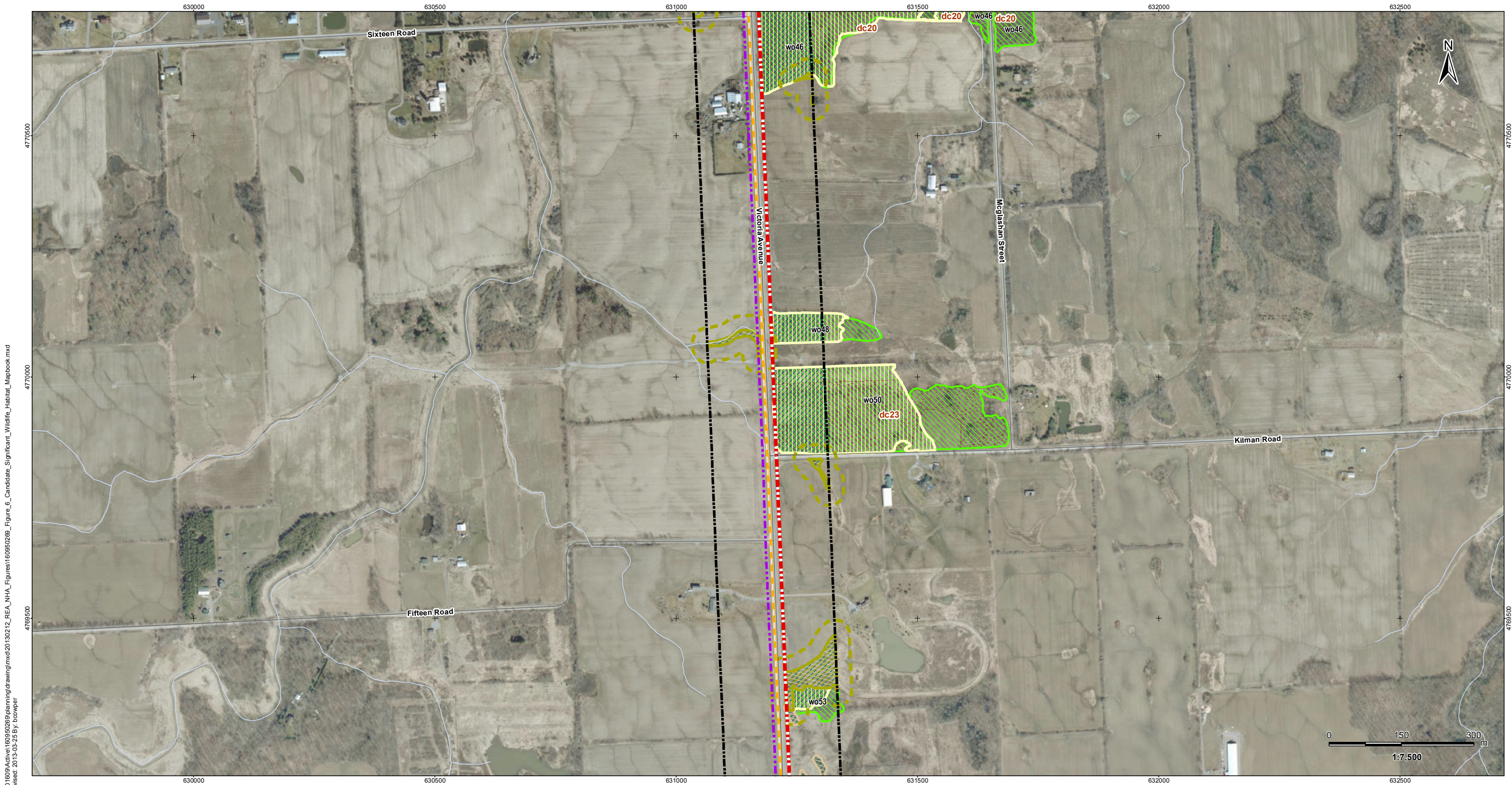
- Coordinate System: NAD 1983 UTM Zone 17N).
- Base features produced under license with the Ontario Ministry of Natural Resources © Queen's Printer for Ontario, 2011.
- Orthoimagery © First Base Solutions, 2010.



Client/Project  
 Niagara Region Wind Corporation  
 Natural Heritage Assessment Report

Figure No.  
 6.18

Title  
**Candidate Significant  
 Wildlife Habitat  
 Figure 6.18**



V:\01609\Archives\160950269\planning\drawing\mxd\20130212\_REA\_NHA\_Figures\160950269\_Figure\_6\_Candidate\_Significant\_Wildlife\_Habitat\_Mapbook.mxd  
 Revised: 2013-03-25 By: bcooper

March, 2013  
160950269

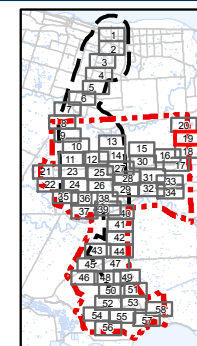


### Legend

- |                            |   |                               |   |                        |
|----------------------------|---|-------------------------------|---|------------------------|
| Project Study Area         | Preferred Transmission Route              | Amphibian Breeding Stations   | Other Rare Vegetation Community   | Turtle Wintering Area  |
| Interconnector Study Area  | Alternate Transmission Route              | Snake Hibernacula             | Amphibian Breeding Habitat  | Bat Maternity Colonies |
| 120m Zone of Investigation | Temporary Laydown Area                    | Snake Hibernacula 30m Buffer  | Cliff and Talus Communities   |                        |
| Proposed Turbine Location  | Collector Lines – Underground or Overhead | MBB Point Count Location      | Raptor Wintering Areas  |                        |
| Turbine Blade Length       | Fibre Optic Line                          | Migratory Bird Transect       | Woodland Raptor Nesting Habitat/<br>Woodland Area Sensitive Bird Breeding Habitat |                        |
| Tap-in Location            | Potential Access Road                     | Winter Raptor Transect        | Woodland Vole Habitat   |                        |
| Junction Box               | Access Road 20m Construction Area         | Woodland Communities          | Terrestrial Crayfish Habitat  |                        |
| Proposed Culvert           | Potential Construction Laydown Area       | Deer Congregation Areas (MNR) | Turtle Nesting Habitat/Snapping Turtle Habitat                                    |                        |
|                            | Transformer Substation                    | Landbird Migratory Stopover   | Turtle Habitat 30m Buffer   |                        |

### Notes

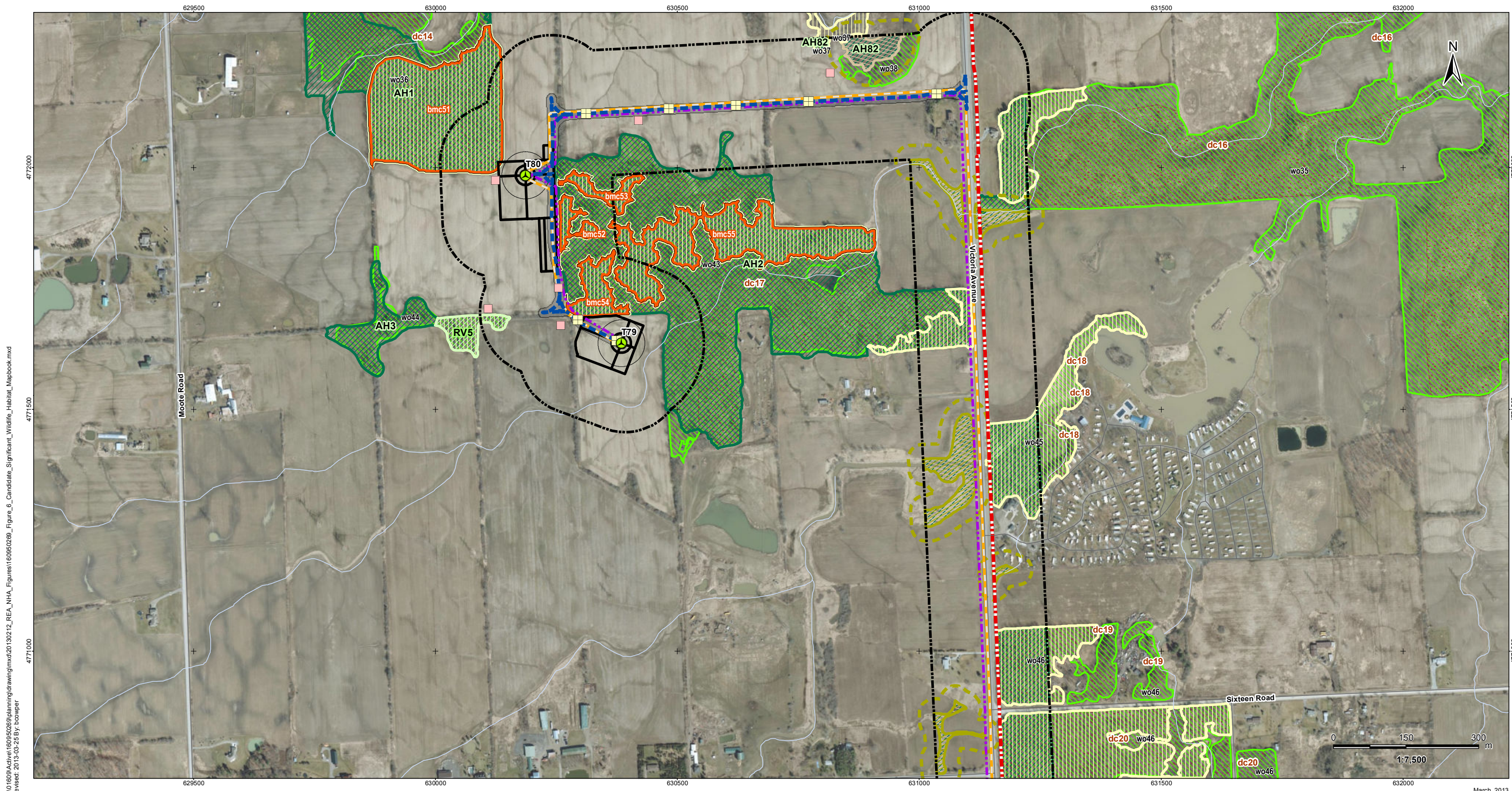
- Coordinate System: NAD 1983 UTM Zone 17N).
- Base features produced under license with the Ontario Ministry of Natural Resources © Queen's Printer for Ontario, 2011.
- Orthoimagery © First Base Solutions, 2010.



Client/Project  
Niagara Region Wind Corporation  
Natural Heritage Assessment Report

Figure No.  
6.19

Title  
**Candidate Significant  
Wildlife Habitat  
Figure 6.19**



V:\01609\Active\160950269\planning\drawing\mxd\20130212\_REA\_NHA\_Figures\160950269\_Figure\_6\_Candidate\_Significant\_Wildlife\_Habitat\_Mapbook.mxd  
 Revised: 2013-03-25 By: bcooper

March, 2013  
160950269

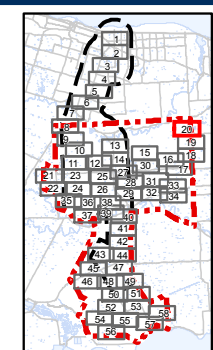


**Legend**

- |                            |   |                               |   |                        |
|----------------------------|---|-------------------------------|---|------------------------|
| Project Study Area         | Preferred Transmission Route              | Amphibian Breeding Stations   | Other Rare Vegetation Community   | Turtle Wintering Area  |
| Interconnector Study Area  | Alternate Transmission Route              | Snake Hibernacula             | Amphibian Breeding Habitat  | Bat Maternity Colonies |
| 120m Zone of Investigation | Temporary Laydown Area                    | Snake Hibernacula 30m Buffer  | Cliff and Talus Communities   |                        |
| Proposed Turbine Location  | Collector Lines – Underground or Overhead | MBB Point Count Location      | Raptor Wintering Areas  |                        |
| Turbine Blade Length       | Fibre Optic Line                          | Migratory Bird Transect       | Woodland Raptor Nesting Habitat/<br>Woodland Area Sensitive Bird Breeding Habitat |                        |
| Tap-in Location            | Potential Access Road                     | Winter Raptor Transect        | Woodland Vole Habitat   |                        |
| Junction Box               | Access Road 20m Construction Area         | Woodland Communities          | Terrestrial Crayfish Habitat  |                        |
| Proposed Culvert           | Potential Construction Laydown Area       | Deer Congregation Areas (MNR) | Turtle Nesting Habitat/Snapping Turtle Habitat                                    |                        |
|                            | Transformer Substation                    | Landbird Migratory Stopover   | Turtle Habitat 30m Buffer   |                        |

**Notes**

- Coordinate System: NAD 1983 UTM Zone 17N).
- Base features produced under license with the Ontario Ministry of Natural Resources © Queen's Printer for Ontario, 2011.
- Orthoimagery © First Base Solutions, 2010.



Client/Project  
 Niagara Region Wind Corporation  
 Natural Heritage Assessment Report

Figure No.  
 6.20

Title  
**Candidate Significant  
 Wildlife Habitat  
 Figure 6.20**

